



Courage Child Protection Week School Lesson Plan

Building our child protection & empowerment community



What is child protection?



Why is it so important?



Child protection is the prevention and responding to violence, exploitation, neglect and abuse against children. It is very important, as abuse, neglect and exploitation can lead to many challenges such as learning disorders, developmental challenges, post traumatic stress, anxiety, depression and suicide. In the long term, a life of violence, can result in substance abuse, poor self regulation, risky sexual behaviour and toxic stress that impacts negatively on a person's health and wellbeing.



My vision of a safe world



Imagine you are looking into the future, where the world has become completely safe and secure for all children to grow up in. In the space below, draw a picture of what a safe community would look like to you?

Identifying challenges

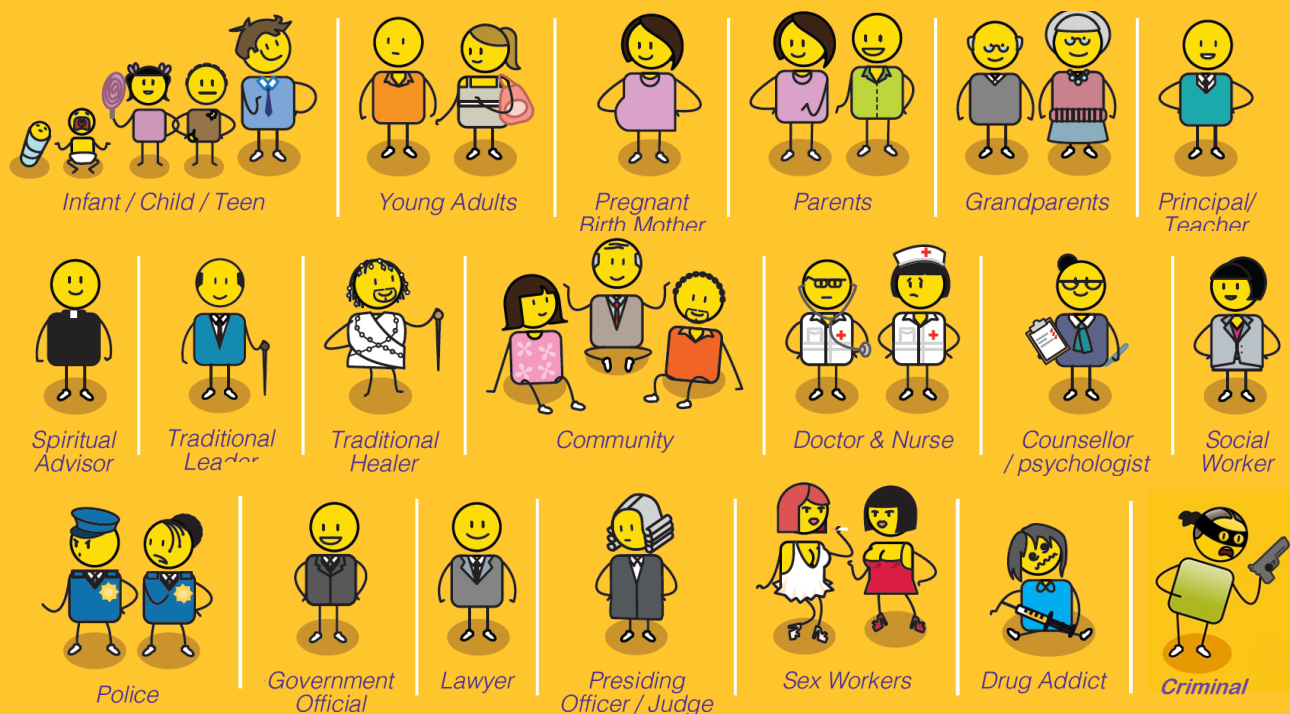


Unfortunately, communities are not very safe for children today, and it important that we understand all the different child protection challenges that may be happening. In the next few pages, you will see pictures of a typical community anywhere in the world complete with people, places and the conversations or interactions they are having. This is the Courage Community Map, and each of these conversations represents a child protection challenge or solution taking place in the world today. On the first page is a key that explains all of the different icons and who the different people are. Use this map to identify all the child protection challenges you have seen or experienced in your community, circle them on the map, and then write what you think are the biggest to smallest challenges in the space below from 1 to 20.

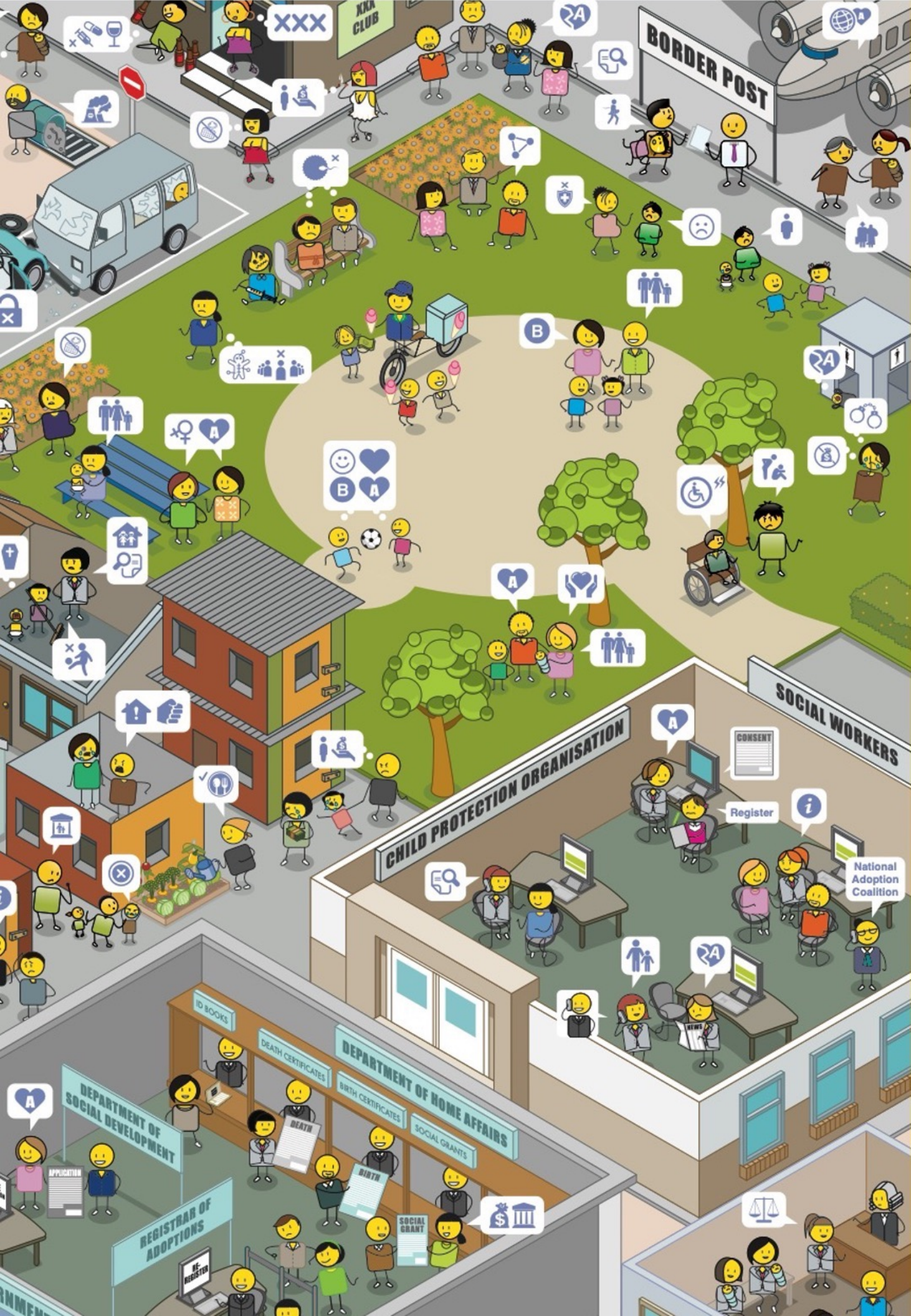
The challenges I have seen in my community are:

1.	11.
<hr/>	<hr/>
2.	12.
<hr/>	<hr/>
3.	13.
<hr/>	<hr/>
4.	14.
<hr/>	<hr/>
5.	15.
<hr/>	<hr/>
6.	16.
<hr/>	<hr/>
7.	17.
<hr/>	<hr/>
8.	18.
<hr/>	<hr/>
9.	19.
<hr/>	<hr/>
10.	20.
<hr/>	<hr/>

Community Map Key









Identifying partners



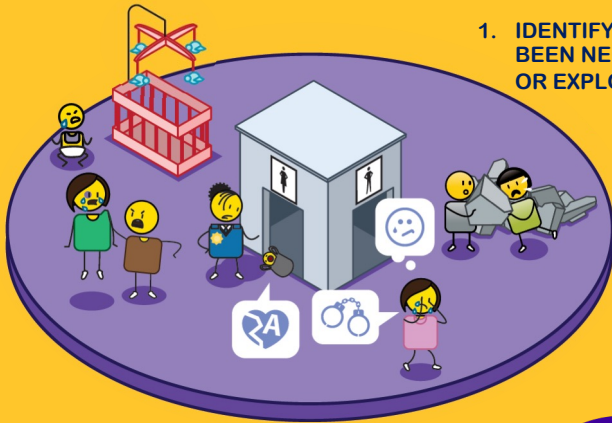
One of the best ways to stay safe is to identify the child protection partners you can talk to in your community. These could be your friends and family, your teacher, sports coach, school counsellor or social worker. You could also chat to your local church or spiritual leader, your traditional community leader, a doctor or nurse, or a police officer. Each of these people have a legal responsibility to take care of children, and to look after them if they are in danger or experiencing any form of violence, abuse, neglect or exploitation. Take a look at the Courage Community Map again and think about all of the partners that can help to keep you safe. Circle them on the map in a different colour and then write their names in the space below. For a summary of the child protection or safeguarding process and all the people involved, please see the next page.

The people I can partner with to stay safe are:

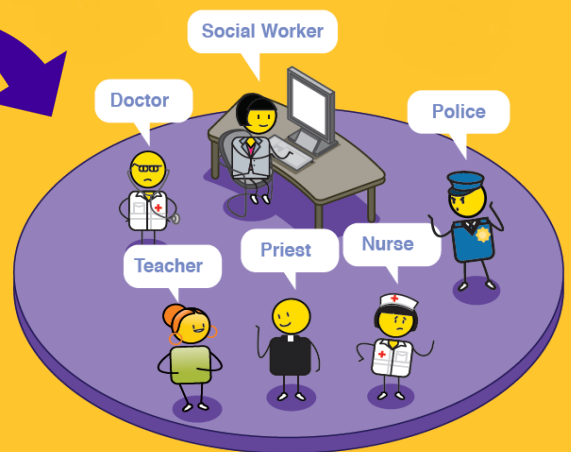
1. _____	11. _____
2. _____	12. _____
3. _____	13. _____
4. _____	14. _____
5. _____	15. _____
6. _____	16. _____
7. _____	17. _____
8. _____	18. _____
9. _____	19. _____
10. _____	20. _____

Child Protection & Safeguarding

1. IDENTIFYING IF A CHILD HAS BEEN NEGLECTED, ABUSED OR EXPLOITED



2. TELLING A CHILD PROTECTION OFFICER



3. INVESTIGATION BY SOCIAL WORKER & THE POLICE



4. REMOVING THE CHILD TO A PLACE OF SAFETY IF THEY ARE IN DANGER



5. COUNSELLING & ASSESSMENT



6. FAMILY SUPPORT



7. CHILDREN'S COURT IF ABUSE, NEGLECT OR EXPLOITATION WAS INTENTIONAL



Statutory & contact details



Courage is an open source child protection and empowerment community engagement programme. We are registered as an NPC No. 2017/422875/08 and an NPO No. 203-137, and have been approved as a Public Benefit Organisation able to provide 18A tax certificates for all donations made in support of the work we do (BPO No. 930076967). You can find all our statutory certificates and annual reports on the Community page of our website.

For more information on how you can partner Courage or make a donation to support the work we do, please contact:

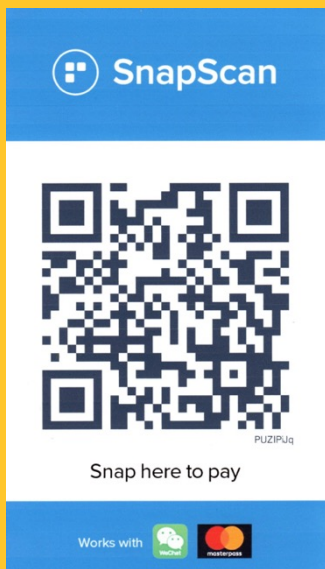
Contact Person: Dr Dee Blackie
Telephone: +27(0)83 3765672
Email: dee@bobi.co.za or couragechildprotection7@gmail.com
Website: www.courage-community.com

To make a contribution

Please see our bank account details below. As a doner you can decide how you would like your donation to be spent by contacting Courage directly. All unspecified donations go towards providing new Courage toolkits and training to child protection organisations in South Africa, Africa and around the world.

Bank Account Details:

Account Name: Courage Child Protection NPC
Bank: Standard Bank of South Africa Ltd.
Branch Code: 006605
Account No: 200877615
Swift address: SBZA ZAJJ
Confirmation/18A: dee@bobi.co.za (Please email for details on issuing of 18A certificates)



Thank you for engaging with
our Courage Child
Protection & Empowerment
community programme –
Stay Strong & Take Courage!

